

01 CHARGING

Remove plug. Insert charger into charging port and plug into USB outlet

Unit is fully charged when all 5 LED indicators light up

MAX
MIN

Insert waterproof plug after charging

02 FOR FOAM APPLICATIONS

Install 3 yellow sponges in filter, install foam tip. Remove sponges for thinner foam, add sponges for thicker foam

Turn clockwise to tighten

03 INSTALL PICK UP TUBE

Air Vent
Pick Up Vent

04 RESERVOIR ATTACHMENT

Detach Top Cover

90°

Lock Top Cover

90°

05 ON/OFF BUTTON

To start, fully press on/off button to lock on sprayer

To stop, fully press on/off button a second time

Soft Start: For a soft start, press on/off button lightly, to stop, release the on/off button

06 FOAM KNOB

Turn clockwise for low foam thickness

Low

Thickness

High

Turn counterclockwise for high foam thickness

07 BATTERY INDICATOR

MAX

MIN

Press and hold battery indicator button to light up battery indicator

08 FOR SPRAY APPLICATIONS

Remove foam tip, remove yellow sponges from filter, reinstall filter, install spray tip

Turn counter clockwise to remove

Turn clockwise to install

09 SPRAY PATTERN TUNER

Foam Nozzle

Water Nozzle

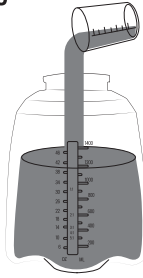
Adjust from vertical to horizontal spraying pattern

Adjust from stream to mist

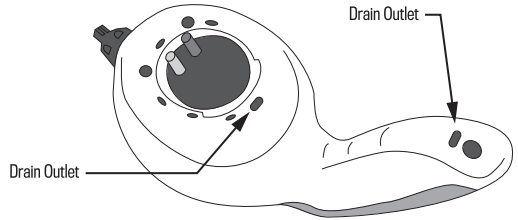
10 CLEANING SOAP RATIO

Most Griot's Garage products are ready to use and do not require dilution. For concentrated products like our foaming system, rinseless products, etc. use the recommended dilution ratio on the label.

Note: Refer to list below for product compatibility.



11 DO NOT BLOCK DRAIN OUTLETS WHEN IN USE



LIQUID PRODUCT COMPATIBILITY

WARNING: Not for use with solvents or acids. Damage to the Cordless Foamer & Sprayer may occur

FOAMING PRODUCTS

- Foaming Surface Prep
- Foaming Surface Wash
- Foaming Poly Gloss
- Brilliant Finish Car Wash
- Brilliant Finish Snow Foam
- Brilliant Finish Foam-On Wax
- Super Concentrated Car Wash
- Best of Show Wash & Wax
- Ceramic Wash & Coat
- Rubber Cleaner
- Engine Cleaner
- Wheel Cleaner
- Bug & Smudge Remover
- Citrus All Purpose Cleaner
- Convertible Top Cleaner
- Interior Cleaner
- Odor Neutralizing Carpet & Upholstery Cleaner
- Odor Neutralizing Leather Cleaner

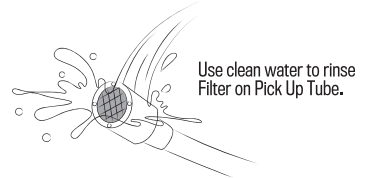
NON-FOAMING PRODUCTS

- Speed Shine
- Best of Show Detailer
- Ceramic Speed Shine
- Ceramic 3-in-1 Wax
- Ceramic Glass Cleaner
- Spray-On Wax
- Best of Show Spray Wax
- Spray-On Car Wash
- Rinseless Wash & Wax
- Brilliant Finish Rinseless Wash
- Window Cleaner
- Interior Detailer
- Surface Prep Cleanser

MAINTENANCE & STORAGE

CLEAN PICK UP TUBE REGULARLY

Rinse and fill reservoir with clean water. Then, activate spraying till no foam or cleaning product sprays from nozzle.



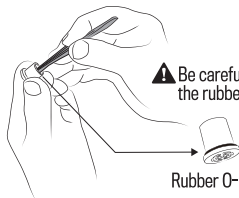
Use clean water to rinse Filter on Pick Up Tube.

! If the filter is blocked, please check if water has impurities.

CLEAN FILTER AND INNER SPONGE REGULARLY



Twist off Spray Pattern Tuner and rinse Inner Sponges with clean water (Replace new Inner Sponge if too dirty)



! Be careful not to lose the rubber O-Ring!

Rubber O-Ring



Rinse and clean Filter at end of Sucking Tube regularly

STORAGE

Store in 32°F ~ 122°F environment and keep it away from heat and combustible material



WARNING!
Keep out of reach of children.